

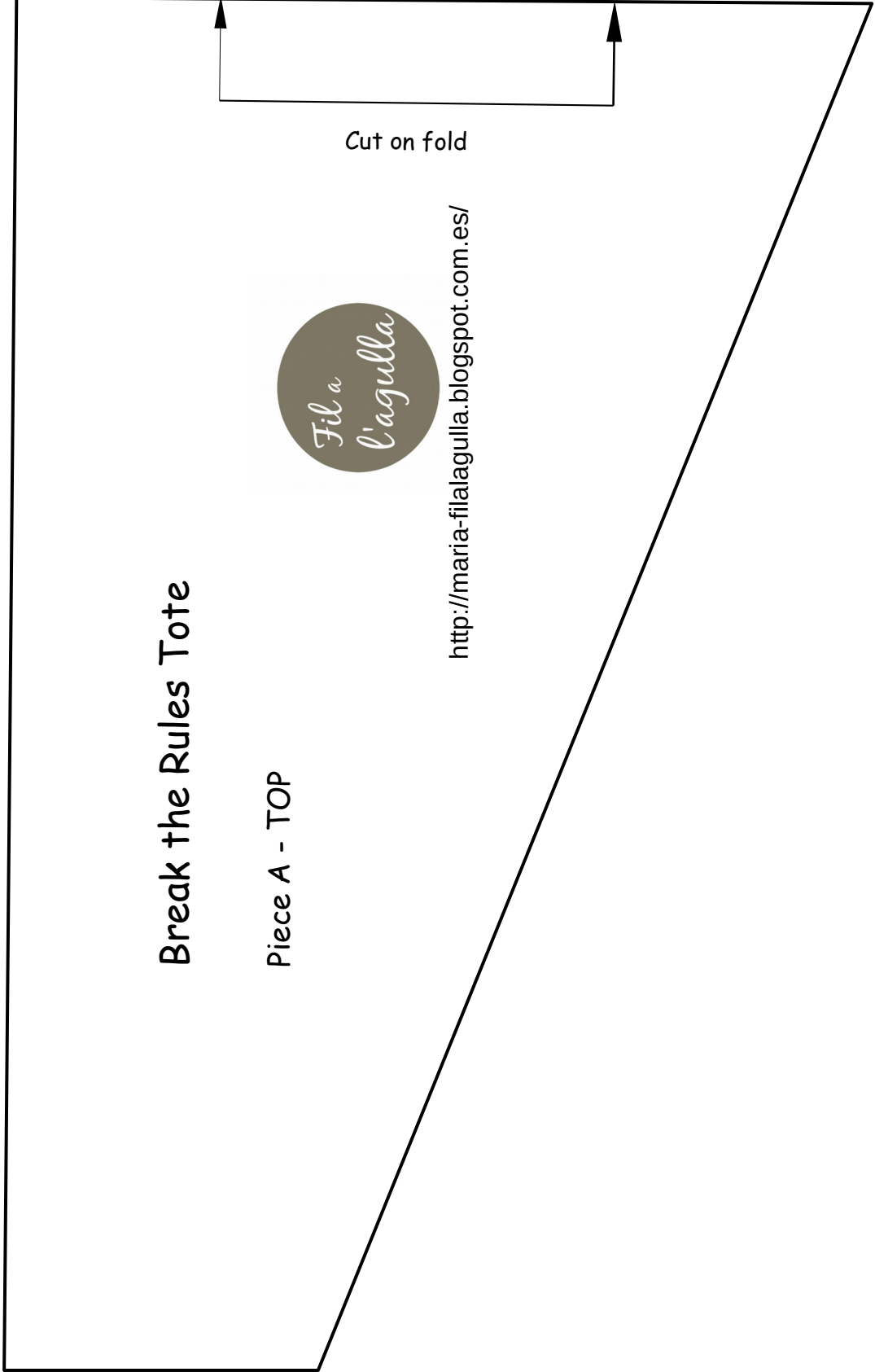
# Break the Rules Tote

Piece A - TOP



<http://maria-filalagulla.blogspot.com.es/>

Cut on fold

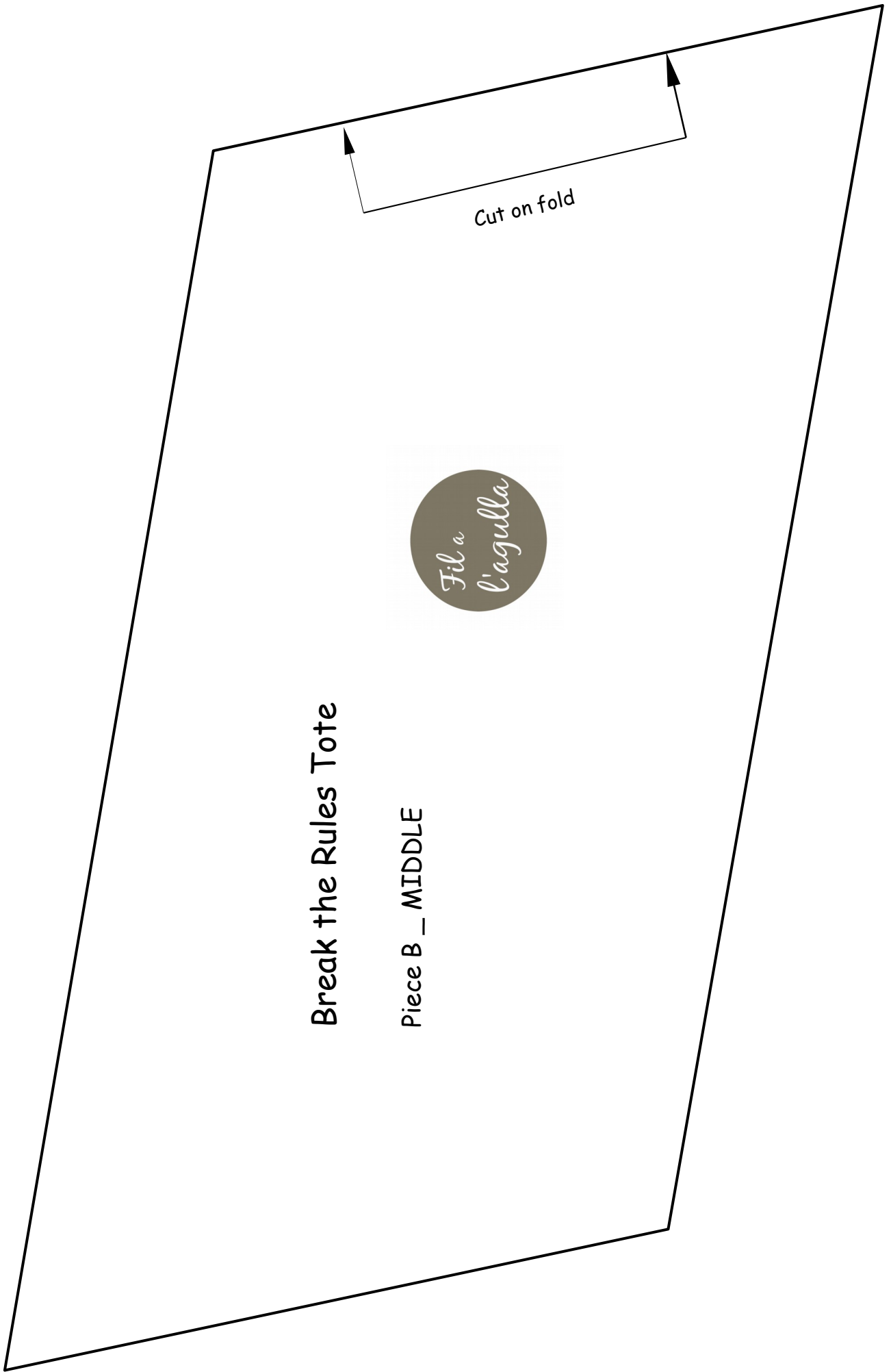


Break the Rules Tote

Piece B \_ MIDDLE



Cut on fold



**Break the Rules Tote**

**Piece C - BOTTOM AND  
BACK**



join to piece D here

join to piece C here



**Break the Rules Tote**

**Piece D - BOTTOM AND BACK**

join to piece E here

Cut on fold



join to piece D here



## Break the Rules Tote

Piece E - BOTTOM AND BACK

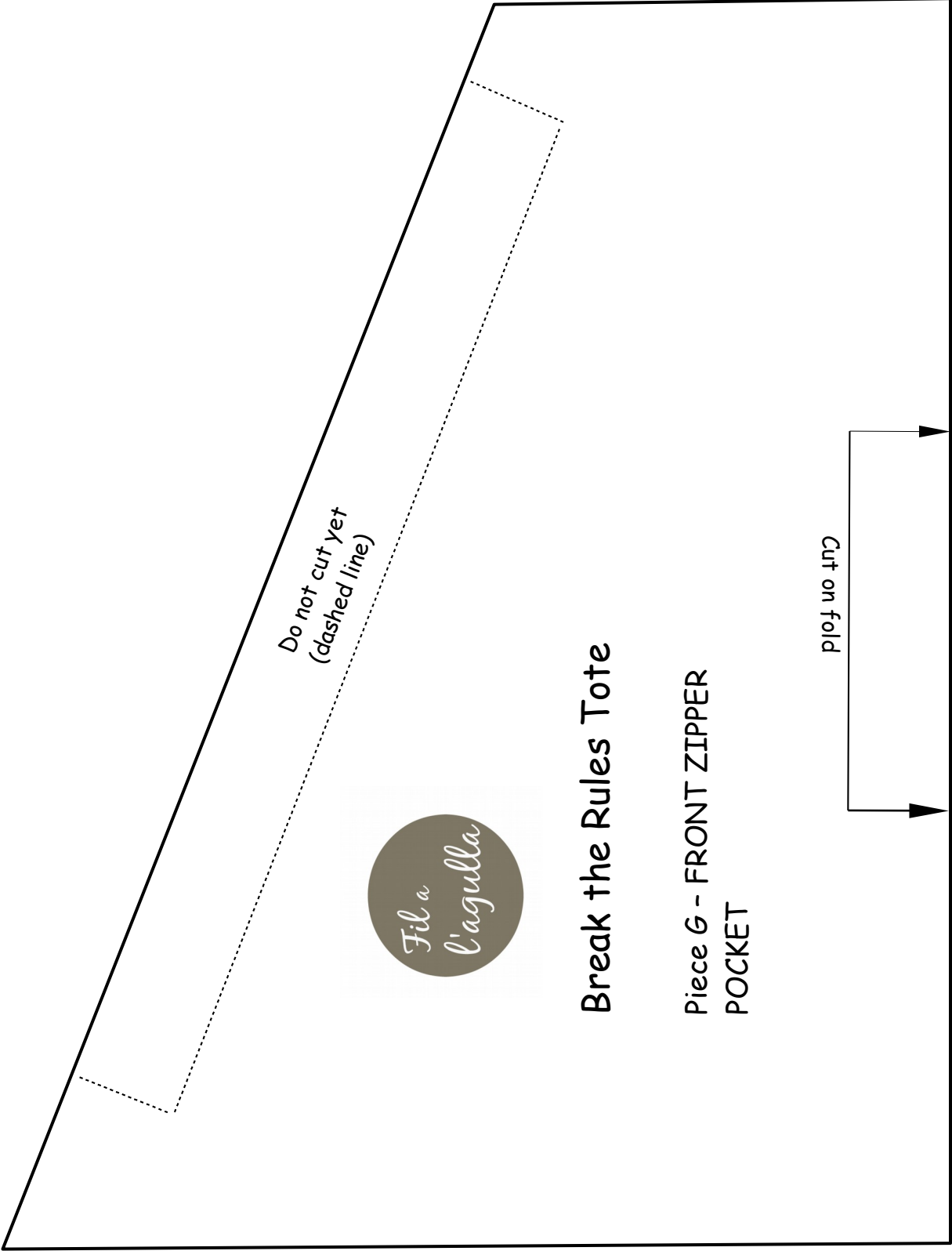
join to piece F here

Join to piece E here



## Break the Rules Tote

Piece F - BOTTOM AND BACK

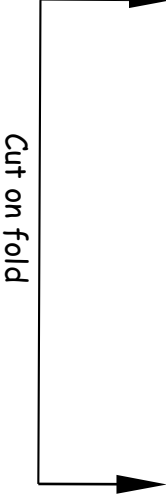


Do not cut yet  
(dashed line)

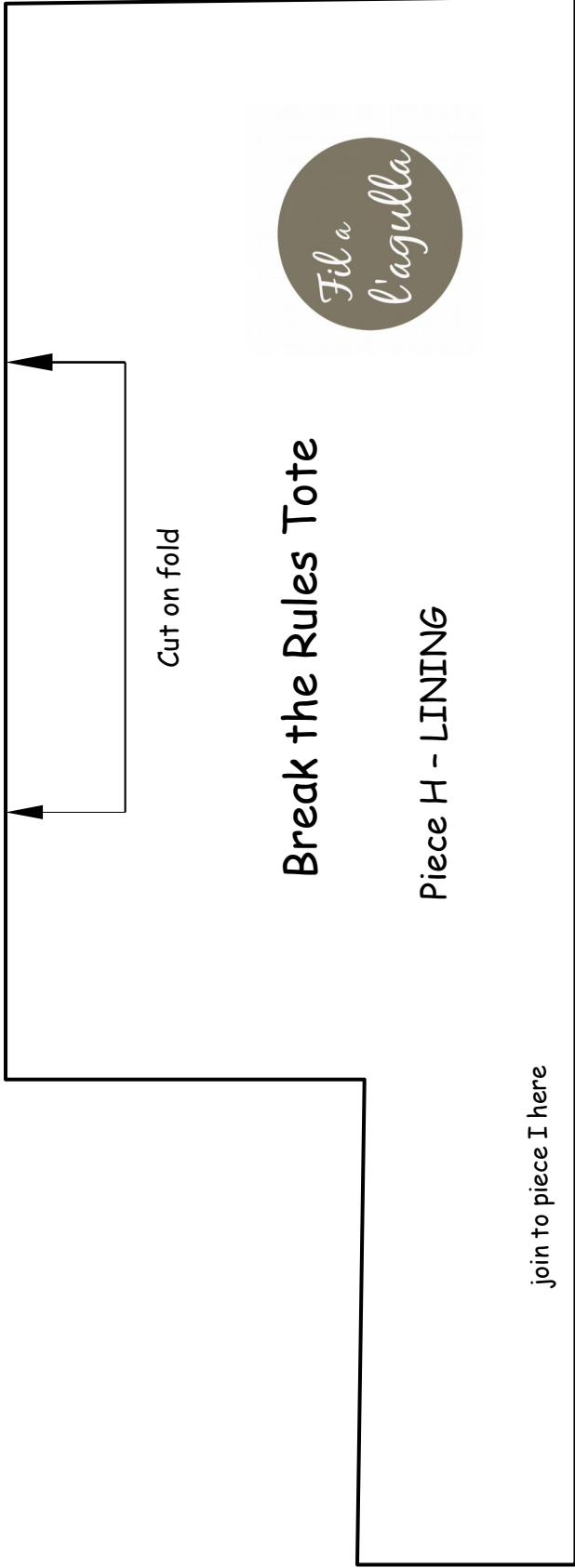


### Break the Rules Tote

Piece G - FRONT ZIPPER  
POCKET



Cut on fold



Cut on fold

# Break the Rules Tote

Piece H - LINING

join to piece I here





join to piece H here

## Break the Rules Tote

Piece I - LINING



join to piece J here

join to piece I here

## Break the Rules Tote

Piece J- LINING

